

314

Dressed
for future

Design by
Claesson Koivisto
Rune (SE)



Ton



PLAY VIDEO ▶

Ton

CLAESSON KOIVISTO RUNE AND TON, SO FAR



822 COLLECTION

Ton

Eero Koivisto (SE)

»314 is a perfect reedition of 014 in its combination of aesthetical softness, lightness, and extreme comfort.«



Ton

MAIN CHARACTERISTICS

Simple

Lightweight

Elegant

Easy to clean


Unusual combination of materials

Suitable for pigmented colours

Nice geometry of a perfectly rounded seat



Ton



»One thing about this chair is the perfectly circular seat, which reduces the visual impact. But it was a challenge: as our body is not circular, we had to find a balance to make it comfortable.

And this is why we had to push the circle, millimeters back and forth.«

Marten Claesson (SE)

Ton

COMPARING TO THE TIMELESS ICON, CHAIR 14

- The same traditional, manual wood-bending technology.
- Mesh Polo material: durable, yet floaty & light; 7 colour options
- Very similar at first glance. Yet they have only one thing in common. »Everything is a bit less rounded.« — Marten Claesson (SE)
- » 314 chair is a perfect re-edition of 014 in its combination of aesthetic softness, lightness and extreme comfort.« — Eero Koivisto (SE)
- Simplified aesthetics, less material/parts used
- Improved ergonomics, especially the mutual balance between the back and the seat
- Less weight yet greater durability »The seat is thicker and higher to allow for the absence of that extra stuff below« — Eero Koivisto (SE)
- The name inspired by the number $\pi = 3.14$



Eero Koivisto (SE)

»When redesigning the iconic 14 we were thinking in terms of what would be done differently if the chair was designed today, how they would do it.«

Ton

AREAS OF USE

HORECA



Due to its low weight and space requirements, together with the easy-to-clean POLO mesh, the chair is an ideal candidate for restaurants, bistros and eateries of all types.

Ton

AREAS OF USE

HOME



The above qualities, combined with its timeless design, will make the 314 a much-loved companion in many households.

Ton

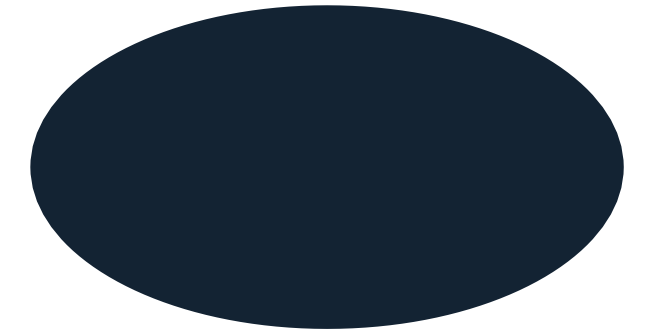
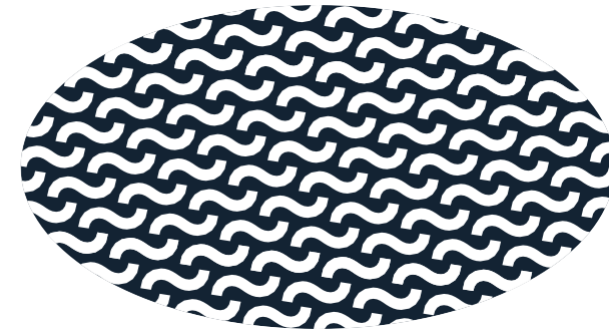
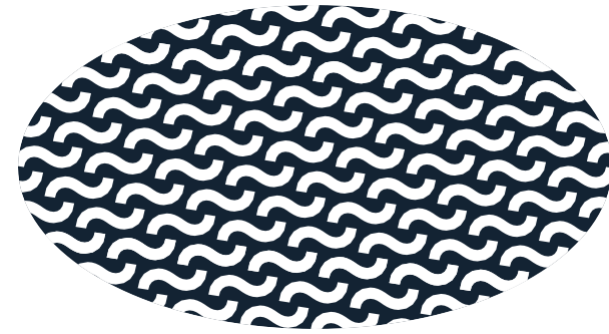
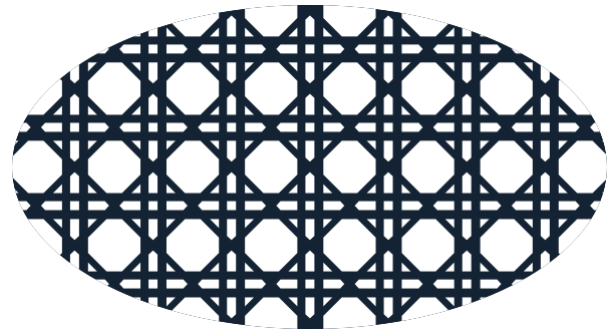
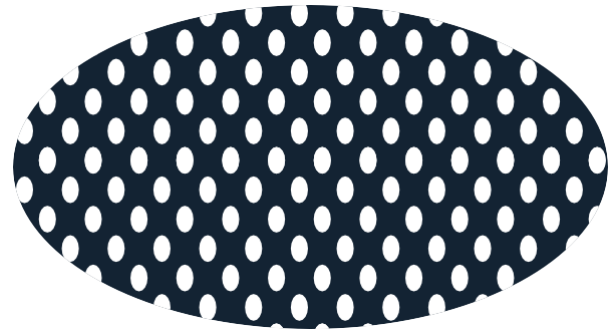
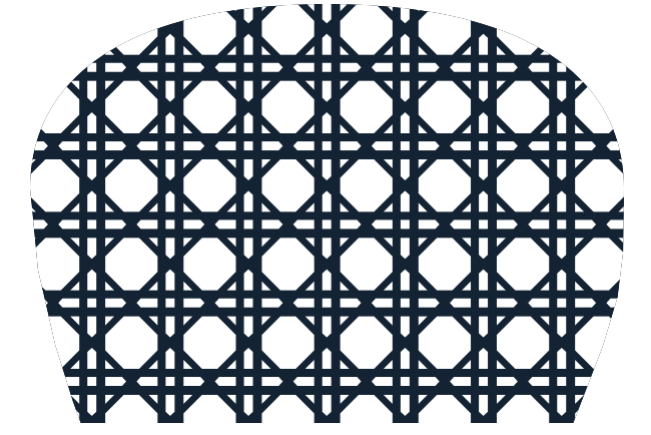
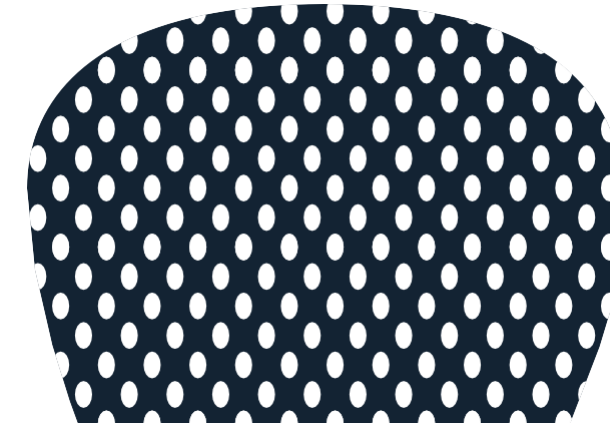
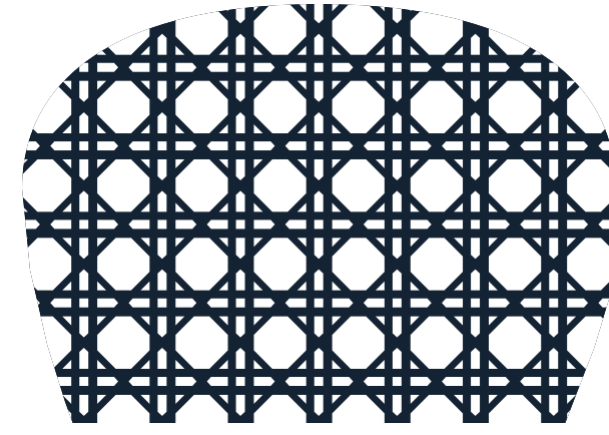
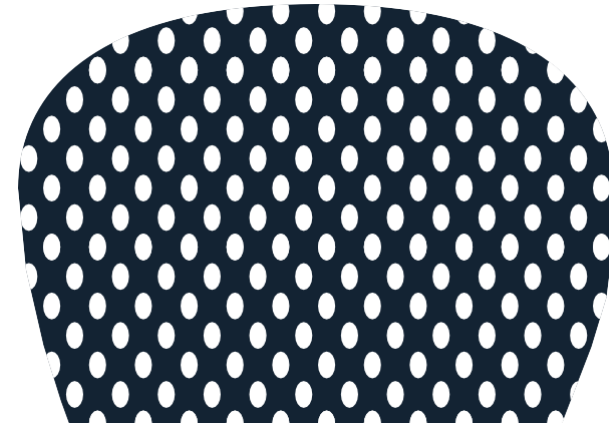
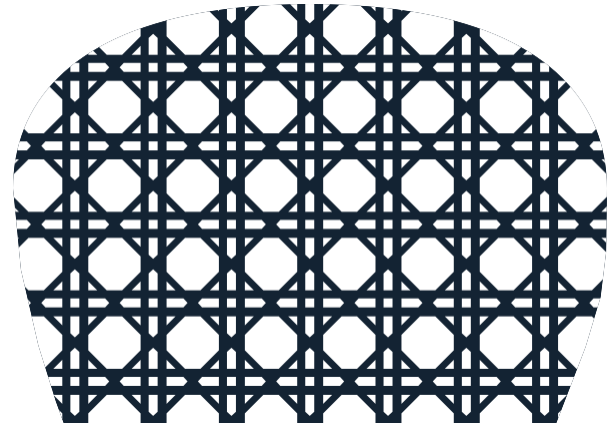
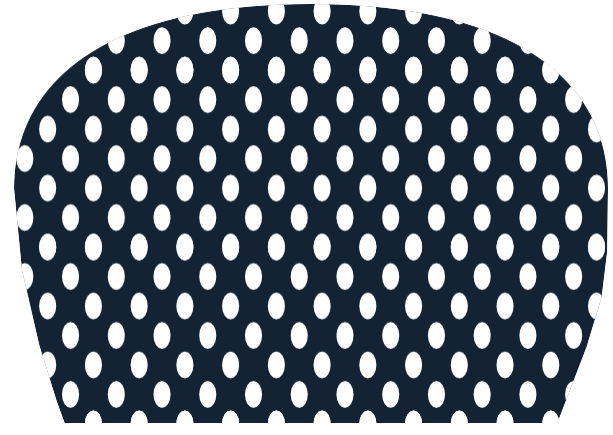
ANYTHING ELSE?

- European solid beech wood, PEFC certificate
- Built and tested to last **10-YEAR WARRANTY**
- Back options: mesh & cane & veneer & upholstery
- Great Mix & Match potential
- Many colour finish options = fits many interiors
- Designed by Claesson Koivisto Rune



Ton

POSSIBLE SEAT & BACK OPTIONS



①

315 314

Mesh back

Mesh seat

②

315 314

Cane back

Cane seat

③

317 314

Mesh back

Upholstered seat

④

317 314

Cane back

Upholstered seat

⑤

316 314

Mesh back

Veneer seat

⑥

316 314

Cane back

Veneer seat

Please click the button to see the product sheet.

[PRODUCT SHEET](#)

To access and download high resolution pictures, 2D & 3D models and more – please click the button and register/login to our Business zone.

[BUSINESS ZONE](#)

Ton

STANDARDS, TESTS, CERTIFICATES

EN 16 139
ANSI BIFMA X5.1

PEFC

ISTA 3A

CA TB 117-2013
BS 5852 Crib 5
UPHOLSTERY

EN 1021 – 1 & 2
MESH



Ton

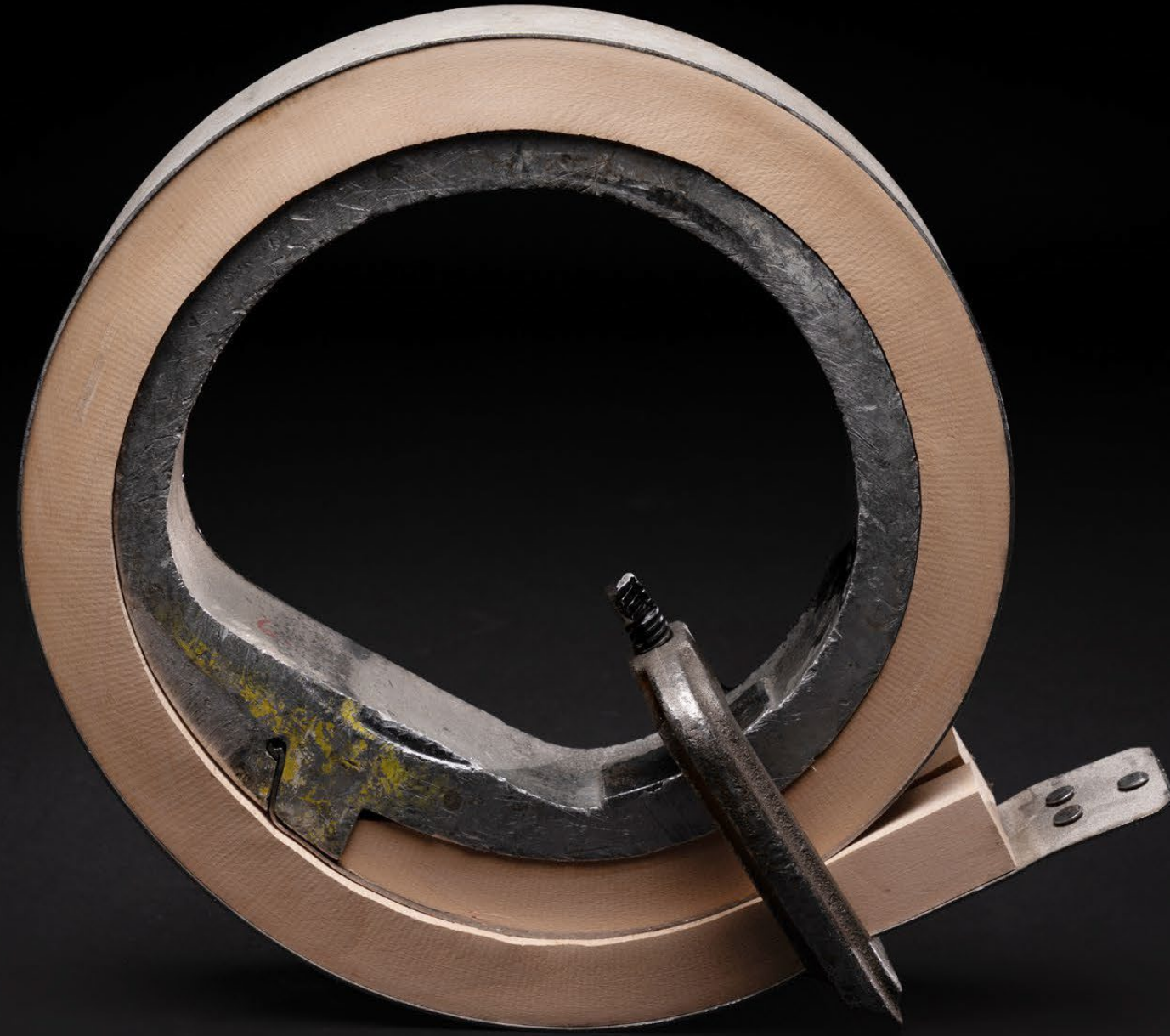
IN-HOUSE TESTING CERTIFICATES

To see the certificates related to the 314 chair, please click the button and scroll down to the DOWNLOADS section.

CHAIR 314



Ton



Ton